

*“Smart People
Solving Problems”*

Buy's & Associates, Inc. is an environmental consulting firm that specializes in defining and resolving your environmental issues.

B&A realizes that time and accuracy can make or break a project. Our approach is to evaluate problems that either the client, the agency, or we have identified and then design and implement a program with cost-effective solutions.

B&A biologists, geologists, paleontologists, archaeologists, NEPA experts, and other specialists provide a unique blend of technical expertise and regulatory knowledge. We understand how to approach even the most difficult projects. With our knowledge of regulatory requirements, you can count on us for practical and appropriate solutions to your environmental needs.

Geographic Information System (GIS) & Computer Aided Drafting (CAD) Services

Data Acquisition & Management

Buy's & Associates' GIS Specialists are skilled in data research, collection, and integration of various data types, including satellite & aerial imagery, GPS, CAD, and survey data. In addition, they work closely with our team of biologists and stormwater specialists to help refine methodology for field surveys and field data acquisition, ensuring accurate, timely results.



Spatial Analysis

Capable and experienced in spatial analysis and the utilization of ESRI's Spatial Analyst extension. This expertise allows our specialists to perform complex calculations, land slope, viewshed analysis, and habitat fragmentation modeling, thus providing a solid foundation for accurate, unbiased analysis.

Cartography & Plotting Services

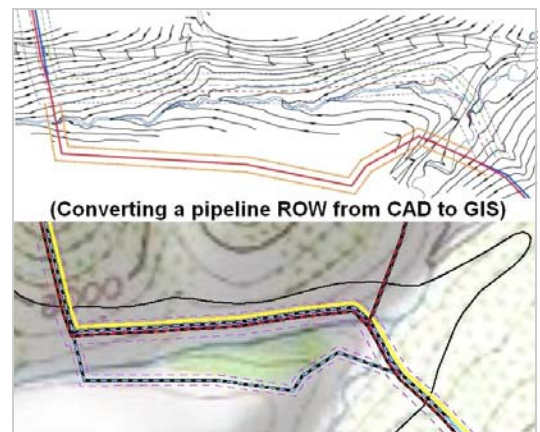
B&A has created thousands of maps and 2-D and 3-D site diagrams that display data associated with natural resource development and environmental studies. In addition, we have all the capabilities to provide our clients with high quality, color deliverables at affordable prices.

Updating Existing Data Sets

Data sets (e.g., parcel coverage) can be updated in GIS and/or CAD format.

Converting Data Between GIS and CAD

We are equipped with Arc GIS 9.3 and AutoCAD Map 3D 2009 and can convert data in between them (or to previous versions). We can also assist you in determining when to use GIS or CAD software for your needs.



As-Built CAD Drawings

Whether from hand drawn sketches provided by our clients or based on a field visit by our staff, B&A can create a set of as-built drawings of any site and turn simple sketches into professional looking drawing sets.

GIS Training

Our skilled staff of GIS Specialists are qualified to provide your company with on-site GIS basics training and application workshops to enhance the use of GIS software and grasp the concepts of GIS science. Our training sessions are customized to YOUR needs and data, for more information contact us today.

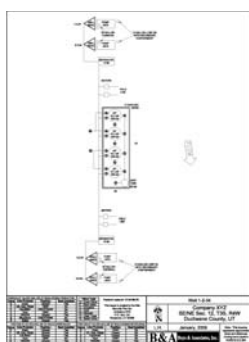
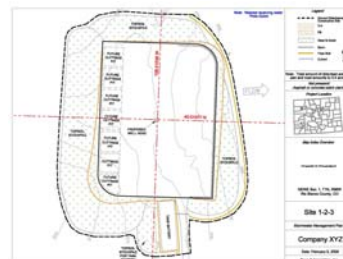
GIS/CAD Applications



Site Reclamation Mapping: Reclamation is now required by federal agencies for most land disturbance activities. B&A's GIS/CAD Specialists are skilled in utilizing field data to map the current reclamation status of existing facilities (i.e. roads, well pads, pipelines, transmission lines, etc.). This is an essential tool in developing baseline data and reasonable success criteria.

Stormwater Best Management Practices (BMP) Mapping:

In accordance with the National Pollution Discharge Elimination System (NPDES) stormwater requirements, permit holders must create site diagrams depicting Best Management Practices (BMPs). B&A's GIS/CAD Specialists are experienced in converting field data into detailed and user friendly site diagrams.



Spill Prevention, Control and Countermeasure (SPCC)/Site Security

Diagrams: B&A's GIS/CAD Specialists utilize AutoCAD to prepare "to scale" site diagrams. These diagrams are prepared in accordance with federal regulations (40 CFR 112) and Onshore Oil and Gas Order No. 3. GIS is also utilized to provide site location topographic maps for SPCC Plans.

Buys & Associates, Inc. GIS/AutoCAD Team

NICOLE PEACE, GIS Coordinator

Ms. Peace is a highly motivated and dedicated GIS professional with over five years of environmental resource management, cartography, and GIS analyst experience. She has extensive knowledge of surveying and mapping principles and practices, including state and federal statutes; research methods and techniques to analyze spatial and statistical data; knowledge of database structure and data maintenance procedures; and proficiency in methods, techniques, and quality assurance employed in generation of maps and GIS products. Her natural resource background aids in preparation and production of accurate, concise, and cartographically pleasing maps using the latest ESRI ArcGIS software. Ms. Peace has developed and maintained custom GIS applications, mapping support, analysis and extensive data research for a wide variety of environmental, biological resources, cultural resources, and regulatory projects, in addition to comprehensive GPS field survey management. As GIS Coordinator, Nicole is heavily reliant on her strong analytical, time management and problem solving skills. Her responsibilities include management of the Geospatial Team and coordination between B&A departments and satellite offices to fulfill any spatial analysis & mapping needs.

LINDSEY HOCKERT, Regulatory/GIS Specialist

Lindsey has over eight years of experience in the oil and gas industry. Some of her major duties includes Applications of Permits to Drill (APDs), Geographic Information System (GIS) work and Spill Plan Countermeasure Control (SPCC) plans. Some of her field accomplishments including leading crews in mapping and staking roads for oil rigs using a Global Positioning System (GPS), mapping pipelines and proposed oil well locations, and observing well site equipment. She also does technical editing of Environmental Assessments (EAs) and Environmental Impact Statements (EISs).

BUYS & ASSOCIATES, INC.

Littleton, CO (303) 781-8211 • Grand Junction, CO (970) 245-0778
Vernal, UT (435) 781-1167 • Moab, UT (435) 719-2018

www.buysandassociates.com